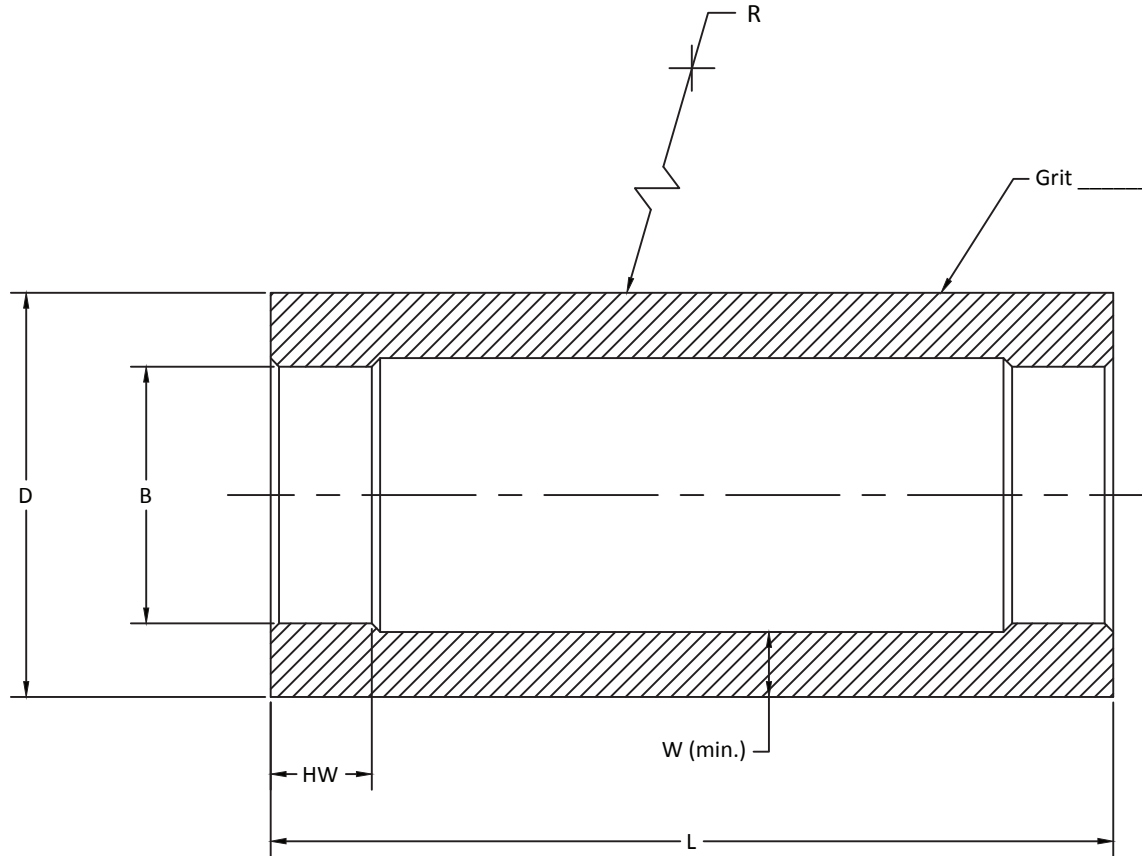


# Plunge Grinding Drum

This drawing and the information contained herein is CONFIDENTIAL and PROPRIETARY to Friction Coating Corporation, is received in CONFIDENCE and shall not be used, copied, or disclosed to others without the written permission of Friction Coating Corporation. Doing so will result in legal action.



## Plunge Grinding Drum Information

D. Diameter: \_\_\_\_\_

W. Wall: \_\_\_\_\_

B. Bore (Finish grind size): \_\_\_\_\_

HW. Hub Width: \_\_\_\_\_

L. Length: \_\_\_\_\_

R. Radius: \_\_\_\_\_

Special Instructions: \_\_\_\_\_

Company: \_\_\_\_\_

Address: \_\_\_\_\_

City, State, Zip: \_\_\_\_\_

Country: \_\_\_\_\_

Contact: \_\_\_\_\_

Phone: \_\_\_\_\_

Fax: \_\_\_\_\_

E-mail: \_\_\_\_\_

Quantity: \_\_\_\_\_

P.O.#: \_\_\_\_\_

STANDARD TOLERANCES UNLESS OTHERWISE NOTED:	
0.0000 ±0.001	
0.000 ±0.005	
0.00 ±0.010	
MATERIAL	1018



42770 Mound Road  
Sterling Heights, MI 48314 • USA  
P 586.731.0990 • F 586.731.0991

## Order Form

A	INITIAL RELEASE	
SYM.	REVISION RECORD	DATE

DATE	DRAWING NO.	
REVISION	DRAWN BY	SHEET

\* Grit selection: Use our "Grit Chart" located on the grinding wheel page.